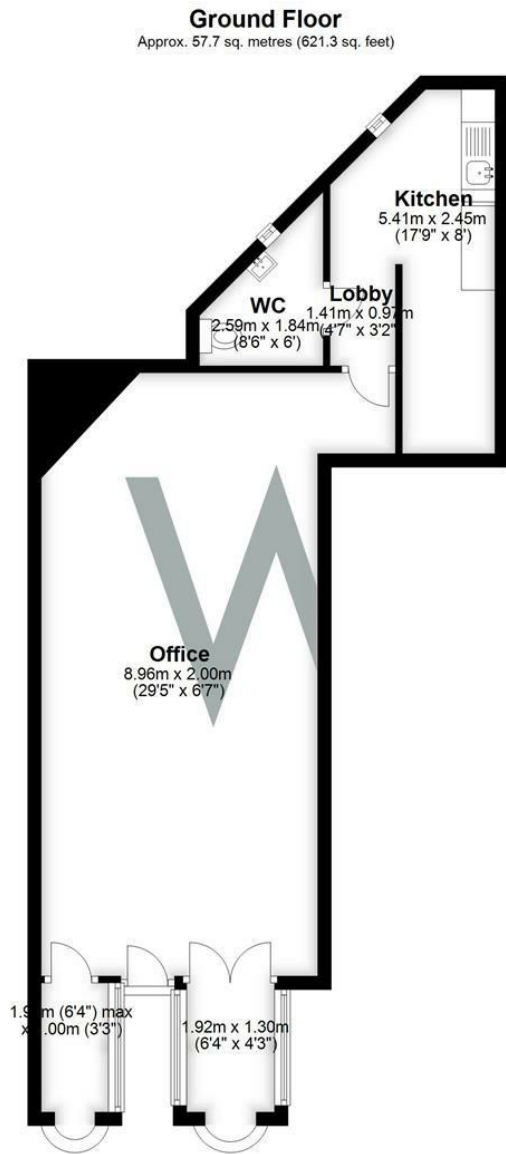




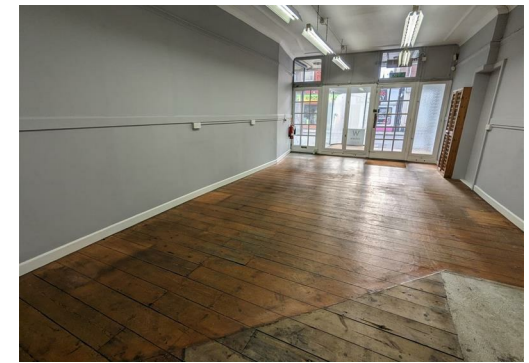
Shop at 142 Fisherton Street, Salisbury, Wiltshire, SP2 7QT

£475 PCM

142 Fisherton Street has A1 usage, it has for the past 20 years or so been occupied by a successful hair dressers. There shop is approx 36 square meters, with wooden flooring, air conditioning units, extended window display with curved glazed bays extending to pavement. At the rear is a lobby, with access to cloakroom, with WC and basin, worcester boiler, pressurised cylinder, high level window. Kitchen with small seating area. inset sink and drainer, double cupboard above and below, double glazed window. No Parking or other outside space.



Total area: approx. 57.7 sq. metres (621.3 sq. feet)



**WHITES**  
Castle Chambers, 47 Castle Street,  
Salisbury, Wiltshire, SP1 3SP  
01722 336422  
[www.hwwhite.co.uk](http://www.hwwhite.co.uk)  
[residential-sales@hwwhite.co.uk](mailto:residential-sales@hwwhite.co.uk)

